

Town of Queensbury

Department of

Waste Water

Details

Revised

10/17/14

INDEX

Manhole Specifications.....	1
Manhole Detail.....	2,3,4
Manhole Invert Channel and Bench Detail.....	5
Manhole Pipe Connection Detail.....	6,7
Manhole Ring and Cover Detail.....	8
Manhole Inside Drop Detail.....	9
Lateral connection Detail.....	10
Pipe Trench Detail.....	11
Grease Trap Detail.....	12
Grease Trap Abandonment Procedures.....	13
Air Test Formula.....	14
Dedicated Meter Installation Detail.....	15

Manhole Specifications

Precast reinforced concrete

Traffic rated

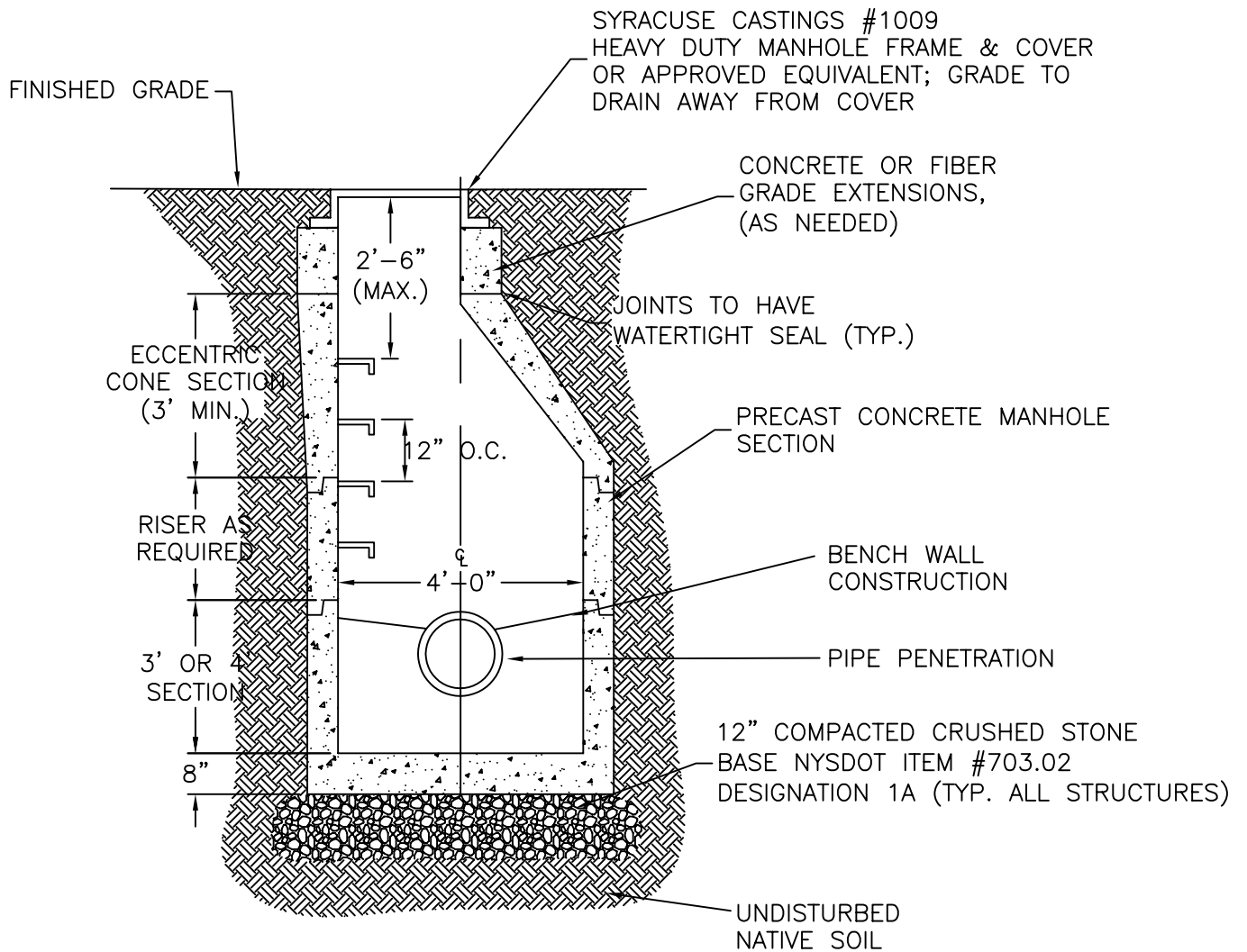
Manhole diameter considered on case by case bases

All pipe openings shall be core drilled and rubber booted to correct pipe size {water tight}

Grade adjustments shall be made by precast concrete, fiber or cast iron riser rings {no bricking}

Manhole joints are to be butyl rope gasketed and seams mortared with non- shrink grout

Cover and frame are to be cast iron without pick holes



Town Of Queensbury - Department of Wastewater - Specification & Details

REVISION	
03/21/11	

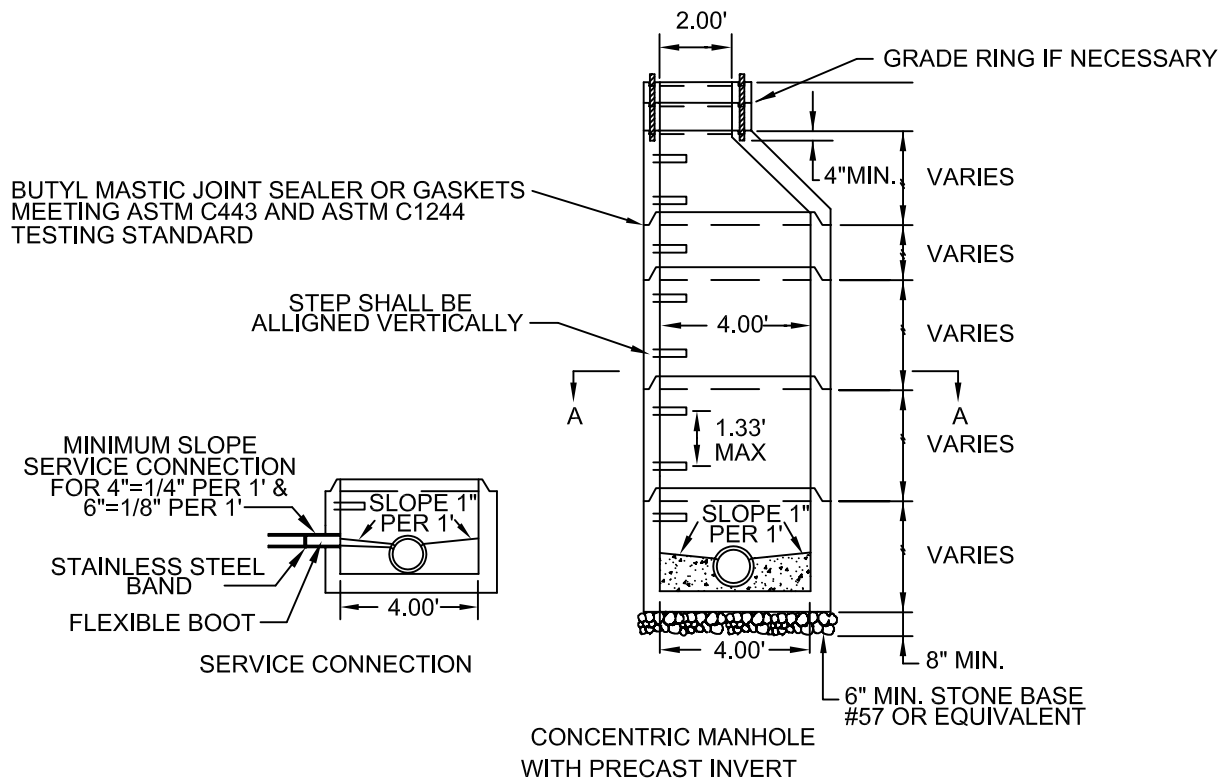
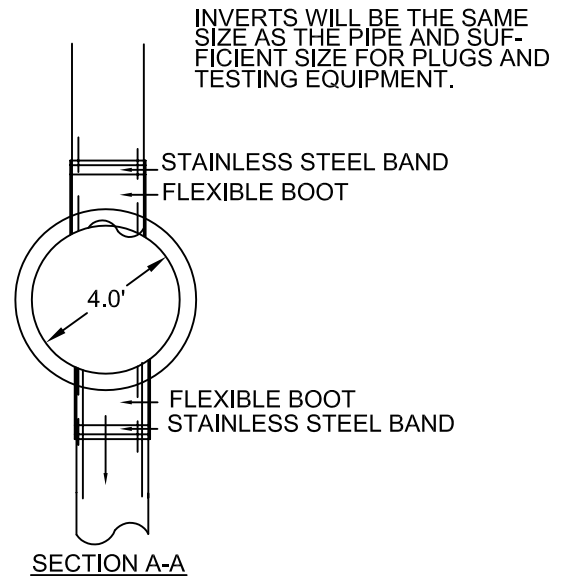
TYPICAL GRAVITY MANHOLE DETAIL

NO SCALE



NOTES:

1. ALL MANHOLE FRAMES AND COVERS SHALL BE SYRACUSE CASTING #1009 OR APPROVED EQUAL.
2. STEPS TO BE VERTICALLY ALIGNED.
3. THE FRAME AND COVER SHALL BE PROPERLY ALIGNED WITH OPENING OF THE MANHOLE STRUCTURE.
4. FLAT TOP MANHOLES MAY ONLY BE SUBSTITUTED WITH THE PERMISSION OF THE UTILITY DIRECTOR. WHEN USED, THE ECCENTRIC OPENING MUST LINE UP WITH THE STEPS.
5. GROUT ANNULAR SPACE BETWEEN PIPE AND PRECAST MANHOLE ON INSIDE OF MANHOLE.



Town Of Queensbury - Department of Wastewater - Specification & Details

REVISION

03/21/11

TYPICAL MANHOLE INSTALLATION DETAIL

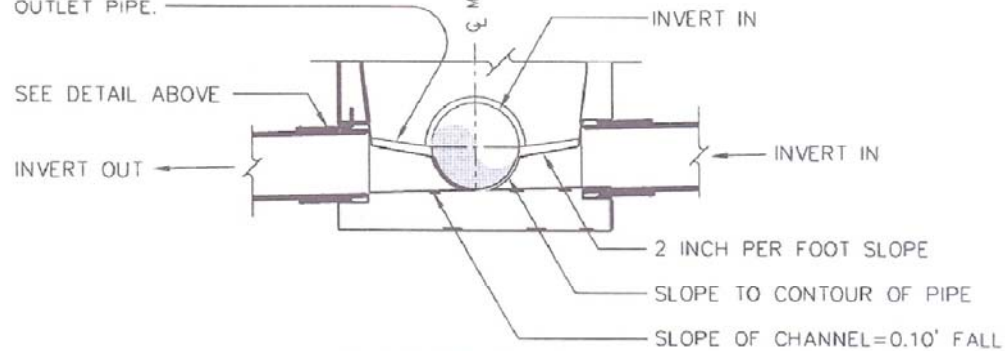
NO SCALE



GROUT OPENINGS INSIDE
MANHOLE AROUND PERIMETER
OF PIPE. (TYPICAL)

FLEXIBLE RUBBER BOOT
ASTM C923 W/STAINLESS
STEEL COMPRESSION
BAND AND CLAMPS

SHAPE TO ELEVATION OF
MIDPOINT OF LARGEST PIPE.
SLOPE 2 INCHES PER FOOT
TO DRAIN TO INVERT OF
OUTLET PIPE.



SECTION A-A

NOTES: ⚠

1. MAXIMUM DEPTH 4' DIAMETER MANHOLE = 20' (SEE SEWER DESIGN SECTION FOR OTHER REQUIREMENTS / LIMITATIONS).
2. THE INVERT SHAPING AS SHOWN SHALL CONSIST OF 3,000 PSI CONCRETE TROWELLED TO A SMOOTH SURFACE WITH NO AGGREGATE EXPOSED.
3. DETAILS OF INVERT SHAPING AS SHOWN HEREON ARE FOR EXAMPLE PURPOSES ONLY. EACH MANHOLE IS TO BE SHAPED INDIVIDUALLY TO BEST FIT THE PARTICULAR INLET AND OUTLET CONFIGURATION AND FLOW LINES.
4. WHEN DIFFERENT DIAMETER PIPES ARE USED FROM INVERT IN TO INVERT OUT, PROVIDE A SMOOTH TRANSITION THROUGH THE INVERT.

Town Of Queensbury - Department of Wastewater - Specification & Details

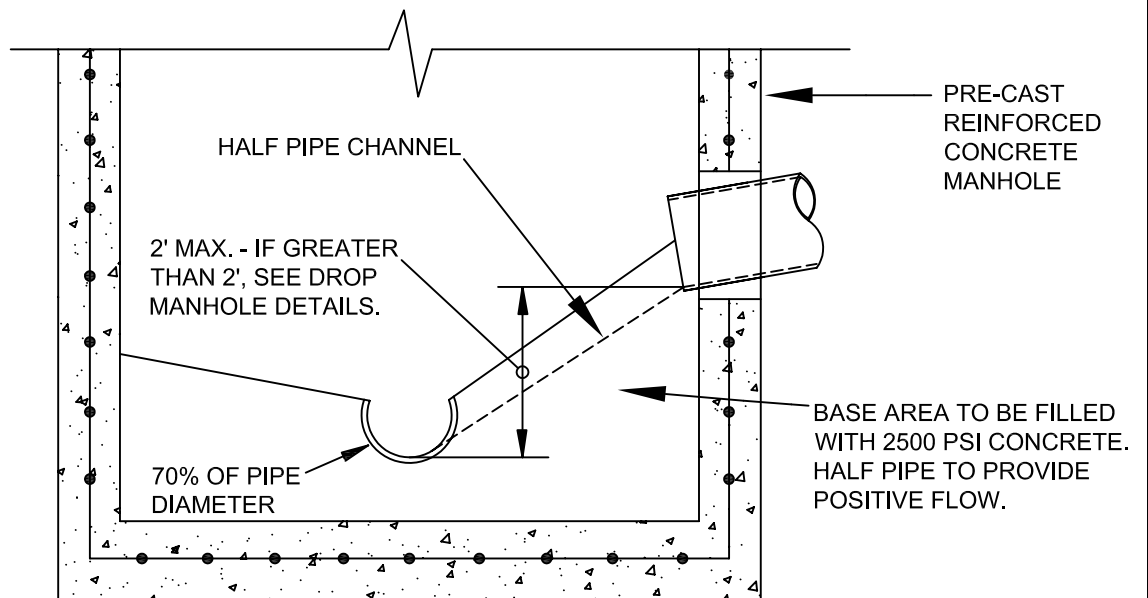
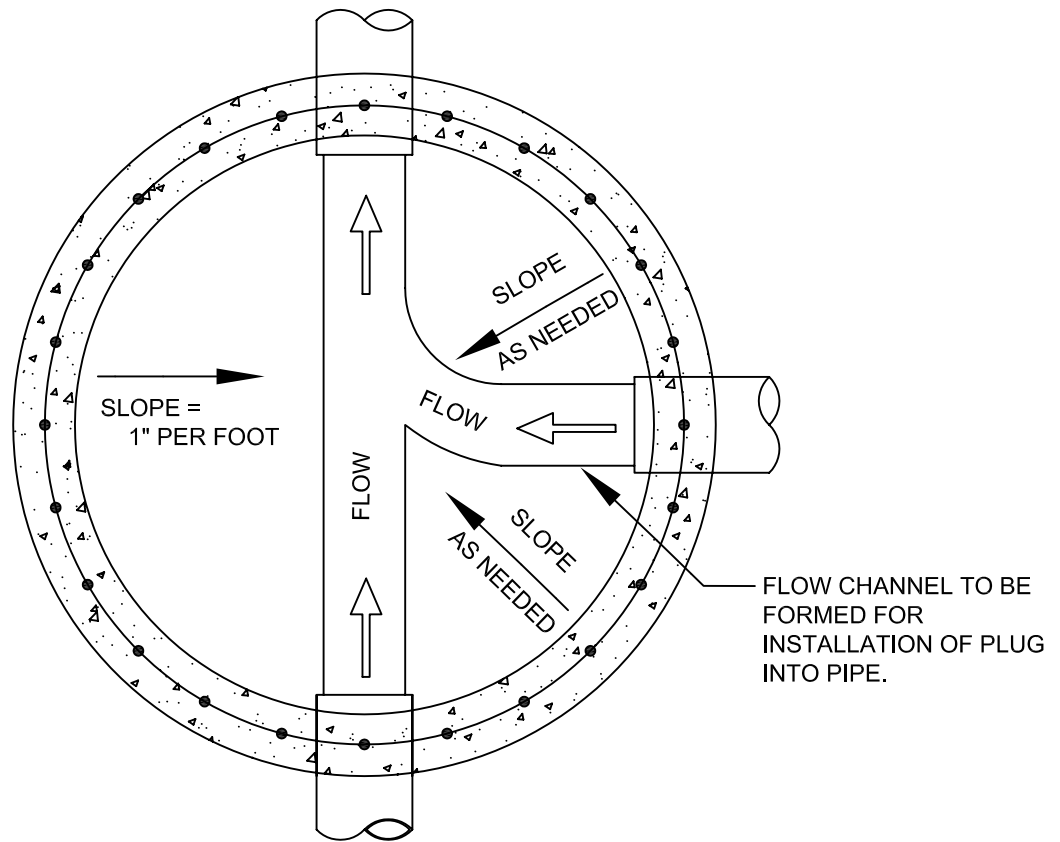
REVISION

03/14/11

FLEXIBLE RUBBER BOOT DETAIL

NO SCALE





Town Of Queensbury - Department of Wastewater - Specification & Details

REVISION	
03/21/11	

**TYPICAL INVERT CHANNEL
AND BENCH DETAIL**

NO SCALE

