

APPLICABLE TO ALL PIPE PENETRATIONS IN ALL STRUCTURES.

Town Of Queensbury - Department of Wastewater - Specification & Details

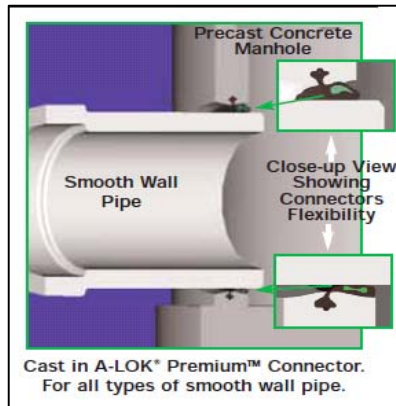
REVISION	
03/14/11	

PIPE PENETRATION DETAIL

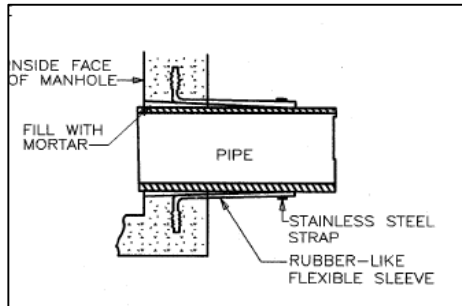
NO SCALE



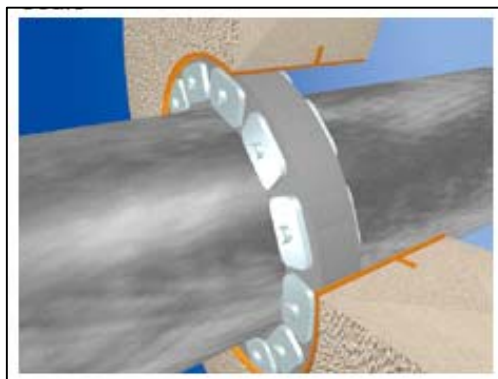
TYPICAL PIPE-TO-MANHOLE CONNECTIONS



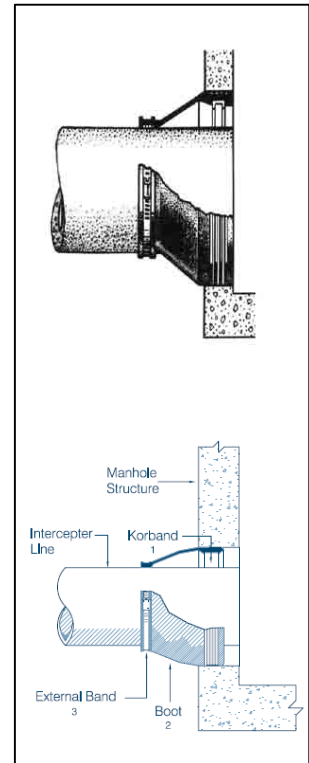
A-LOK® FLEXIBLE CONNECTOR



LOCKJOINT® FLEXIBLE CONNECTOR



LINK-SEAL® FLEXIBLE CONNECTOR

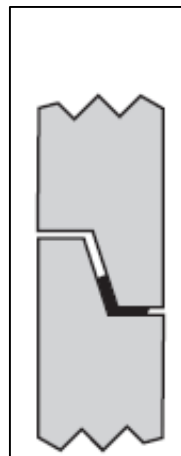


KOR-N-SEAL® FLEXIBLE CONNECTOR

TYPES OF JOINT SEALANTS

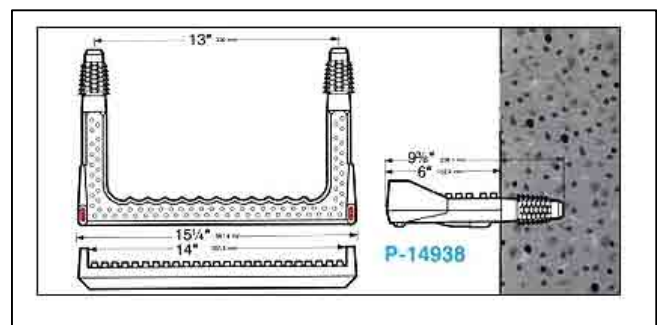


O-RING



BUTYL

STEPS



M.A. INDUSTRIES COPOLYMER
POLYPROPYLENE PLASTIC STEPS

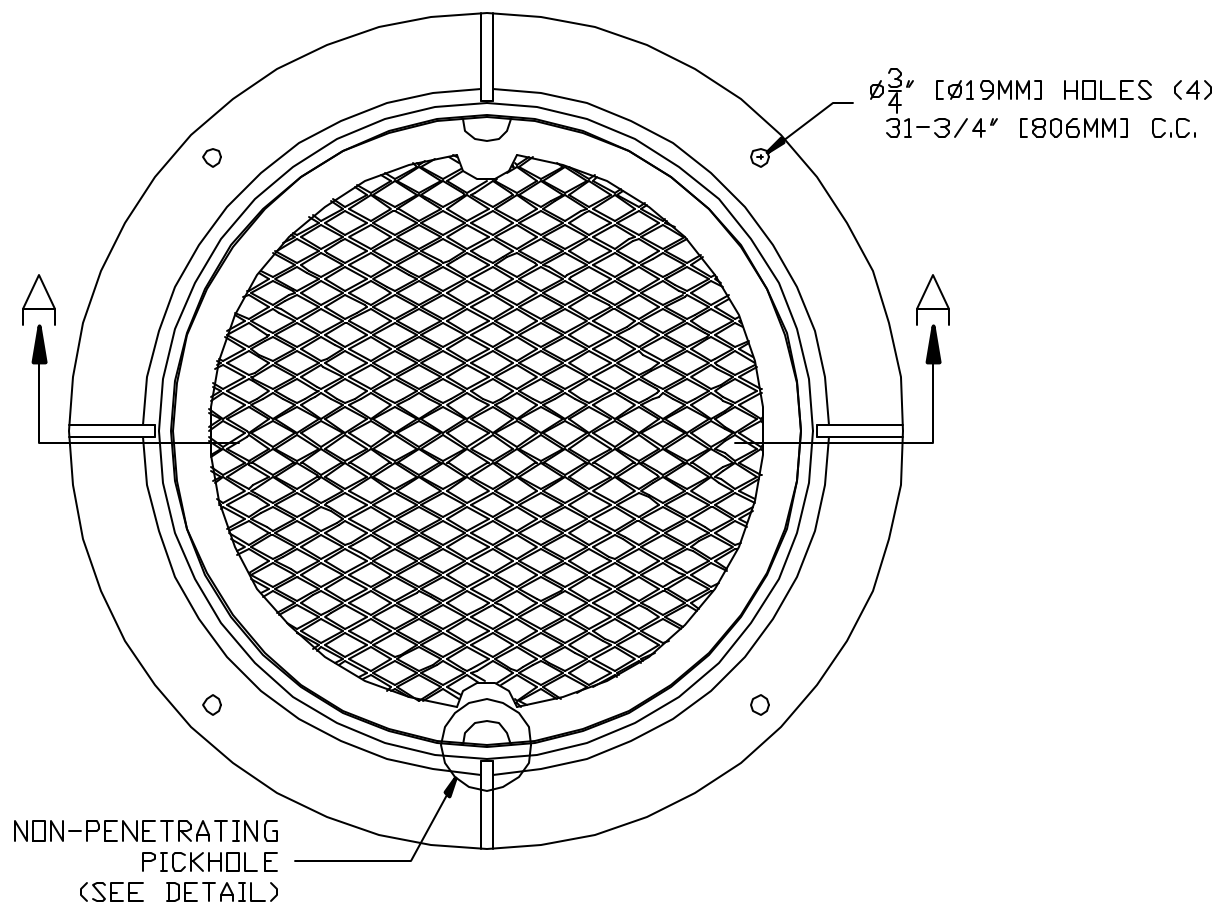
Town Of Queensbury - Department of Wastewater - Specification & Details

REVISION	
03/14/11	

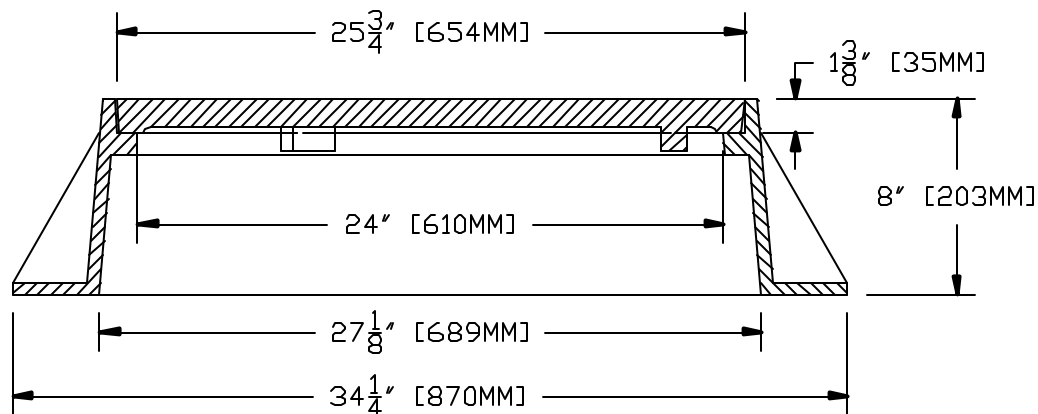
MANHOLE CONNECTION DETAILS

NO SCALE





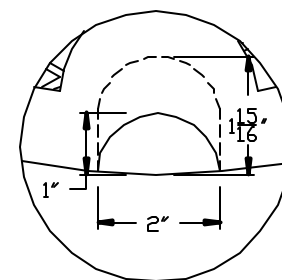
NON-PENETRATING
PICKHOLE
(SEE DETAIL)



SECTION A - A

NOTES:

- 1.) MATERIAL SHALL BE GRAY CAST IRON CONFORMING TO A.S.T.M. A48 (LATEST REVISION) CLASS 30B.
- 2.) UNITS DESIGNED HEAVY DUTY FOR A.A.S.H.T.O. HS20-44 WHEEL LOADS.
- 3.) EACH FRAME AND COVER SHALL HAVE MACHINED HORIZONTAL BEARING SURFACES..



NON-PENETRATING
PICKHOLE DETAIL

THIS DOCUMENT IS THE PROPRIETARY PROPERTY OF SYRACUSE CASTINGS. IT HAS BEEN FURNISHED UPON THE CONDITION THAT IT SHALL NOT BE RELEASED, DUPLICATED, USED, OR DISCLOSED IN WHOLE OR IN PART FOR ANY PURPOSE WITHOUT THE EXPRESS WRITTEN PERMISSION OF SYRACUSE CASTINGS AND SHALL BE CONSIDERED CONFIDENTIAL INFORMATION.

Pattern 1009-8 Cast Iron
Round Flange Frame & Cover

DRAWING # 1009459XC-1204561PC

Drawn By: TJM

DATE: 7/23/09

Revised By:

Revised:



Syracuse Castings

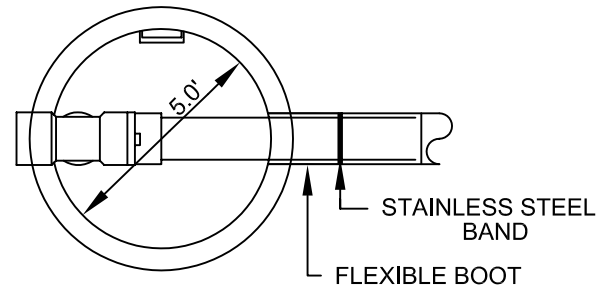
Better By Design

P.O. Box 1821
6177 South Bay Rd.
Cicero, N.Y. 13039

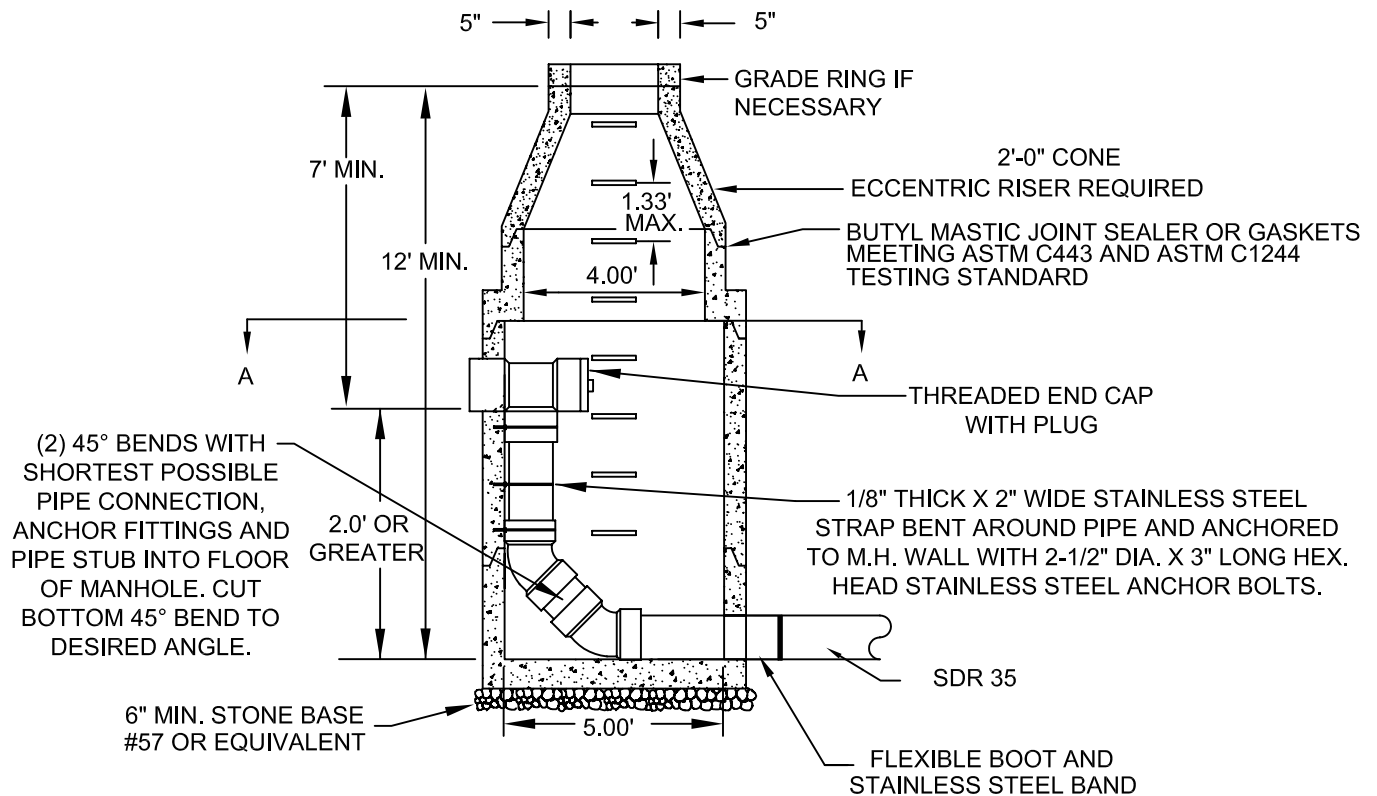
Phone # 315-699-2601 Fax # 315-699-2982 www.syracast.com

NOTES:

1. ALL MANHOLE FRAMES AND COVERS SHALL BE SYRACUSE CASTING #1009 OR APPROVED EQUAL.
2. STEPS TO BE VERTICALLY ALIGNED.
3. THE FRAME AND COVER SHALL BE PROPERLY ALIGNED WITH THE OPENING OF THE MANHOLE STRUCTURE.
4. RELINER BY DURAN INSIDE DROP WILL BE ALLOWED.
5. GROUT ANNULAR SPACE BETWEEN PIPE AND PRECAST MANHOLE ON INSIDE OF MANHOLE.
6. STEPS SHALL BE A MINIMUM OF 90 DEGREES FROM DROP.



SECTION A-A



**NOTE : 6' DIAMETER MANHOLE REQUIRED
FOR TWO INSIDE DROP CONNECTIONS**

Town Of Queensbury - Department of Wastewater - Specification & Details

REVISION

03/21/11

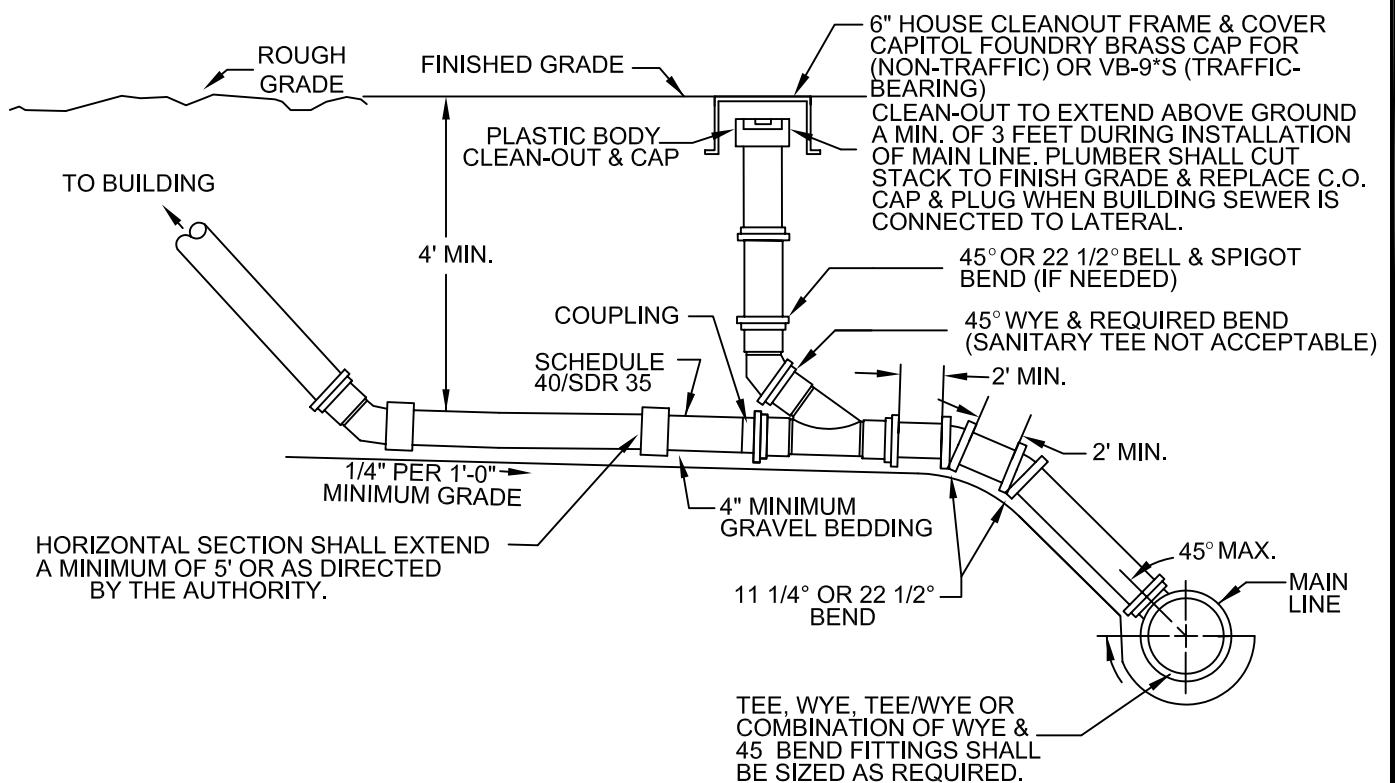
INSIDE DROP MANHOLE DETAIL

NO SCALE



GENERAL NOTES:

1. ALL PIPE AND FITTINGS SHALL BE OF SIMILAR MATERIAL.



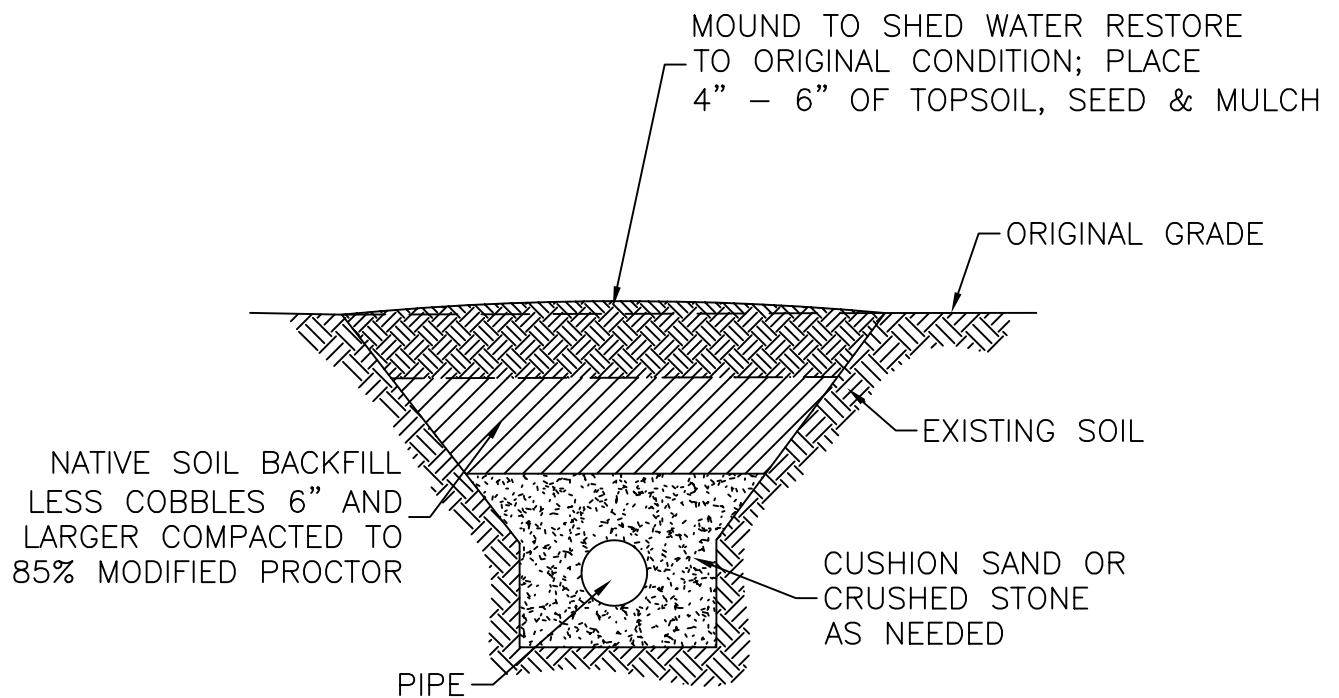
Town Of Queensbury - Department of Wastewater - Specification & Details

REVISION	
03/22/11	

TYPICAL DETAIL FOR SEWER SERVICE CONNECTIONS

NO SCALE





Town Of Queensbury - Department of Wastewater - Specification & Details

REVISION	
03/21/11	

TRENCH DETAIL

NO SCALE



Grease Trap Specifications

Precast concrete

If installed in driveway or parking lot, must be traffic rated

Must have at least 2 access covers, no larger than 30” dia.

Covers must be cast iron, no pick holes and to grade

Only concrete, fiber or iron risers, No bricking

All seams must be mortared with non-shrink grout

Inlet and outlet holes must be core drilled to proper pipe size and all pipe connections must be water tight. Polyethylene seal, link seal or Kor-n-seal connections

Discharge pipe must have a tee baffle constructed in the trap. Pipe should be 8” from bottom of trap

Trap must be water tight

Trap size to be determined on a case by case basis