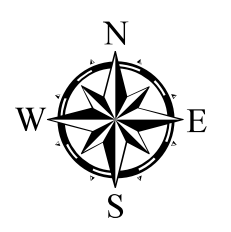


Town of Queensbury  
Stormwater Outfalls



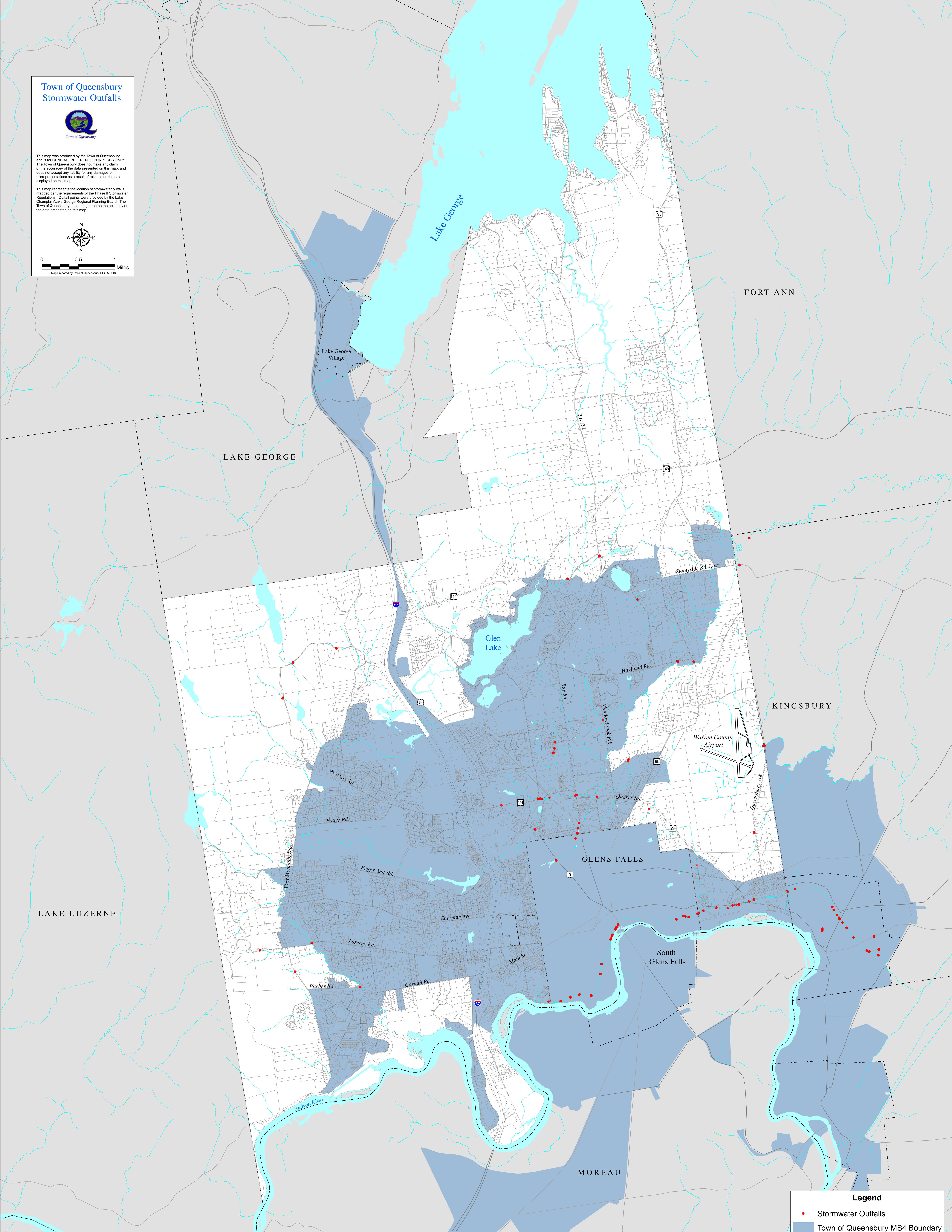
This map was produced by the Town of Queensbury and is for GENERAL REFERENCE PURPOSES ONLY. The Town of Queensbury does not make any claim of the accuracy of the data presented on this map, and does not accept any liability for any damages or misrepresentations as a result of reliance on the data displayed on this map.

This map represents the location of stormwater outfalls mapped per the requirements of the Phase II Stormwater Regulations. Outfall points were provided by the Lake Champlain/Lake George Regional Planning Board. The Town of Queensbury does not guarantee the accuracy of the data presented on this map.



0 0.5 1 Miles

Map Prepared by Town of Queensbury GIS - 1/2013



**Legend**

- Stormwater Outfalls
- Town of Queensbury MS4 Boundary