


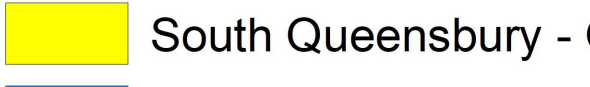

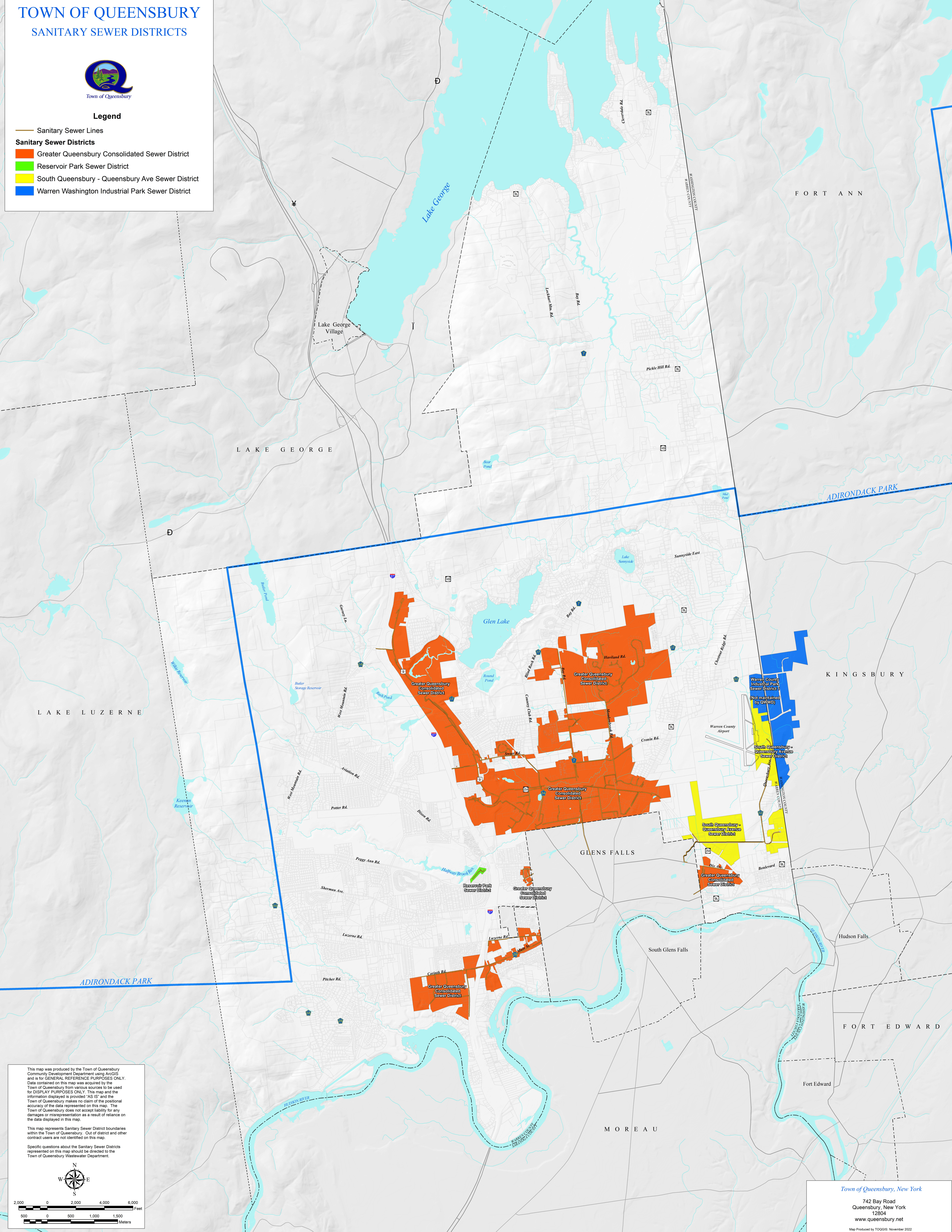


TOWN OF QUEENSBURY SANITARY SEWER DISTRICTS



Legend

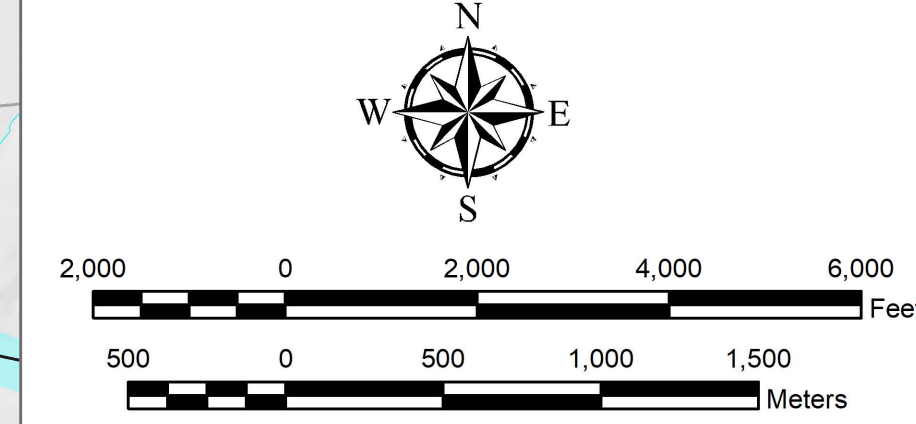
-  Sanitary Sewer Lines
- Sanitary Sewer Districts**
-  Greater Queensbury Consolidated Sewer District
-  Reservoir Park Sewer District
-  South Queensbury - Queensbury Ave Sewer District
-  Warren Washington Industrial Park Sewer District



This map was produced by the Town of Queensbury Community Development Department using ArcGIS and is for GENERAL REFERENCE PURPOSES ONLY. Data contained on this map was acquired by the Town of Queensbury from various sources to be used for DISPLAY PURPOSES ONLY. This map and the information displayed is provided "AS IS" and the Town of Queensbury makes no claim of the positional accuracy of the data represented on this map. The Town of Queensbury does not accept liability for any damages or misrepresentation as a result of reliance on the data displayed in this map.

This map represents Sanitary Sewer District boundaries within the Town of Queensbury. Out of district and other contract users are not identified on this map.

Specific questions about the Sanitary Sewer Districts represented on this map should be directed to the Town of Queensbury Wastewater Department.



Town of Queensbury, New York
742 Bay Road
Queensbury, New York
12804
www.queensbury.net
Map Produced by TOGIS: November 2022